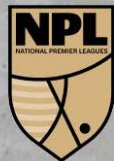


NISL PREMIER LEAGUE SPRING 2024



2023-2024

MEMBER LEAGUES



capelli
SPORT



HISTORY OF THE NISL

The Northern Illinois Soccer League (NISL) was founded in 1975, and has since become one of the largest and most competitive Youth Soccer Leagues in the United States. With over 12,000 players on 800 teams in more than 90 Chicago Metropolitan communities, the NISL, as a member of US Club Soccer and the US Soccer Federation, is authorized to carry out registration of Amateur Youth & Senior Clubs and Programs.



- Website
- Twitter
- Instagram
- Youtube

www.nisl.info
@NISLsoccer
@NISLsoccer
NISLsoccer

- 100% Member of US Club Soccer, a direct affiliate of US Soccer.
- Development Division (Boys and Girls 7U-19U)
 - Comprising Average of 24 teams per level.
 - Highest to Lowest.
(Premier, Championship, Platinum, Gold, Silver, Bronze, Red, White)
 - Teams grouped geographically. (North, Central, South, West)
- N.I.S.L. (Northern Illinois Soccer League) – **Total 12,282 participants**
- Member of US Club Soccer National Premier Leagues. NPL
(Boys and Girls 12U-19U) – 2,834 participants
 - Premier Division is the strongest Club League in the Midwest.
 - All games played at a designated location, on field turf, and under lights
(Olympic Park, Schaumburg, Canlan Sportsplex, Barrington)
- High School (Boys and Girls 15U-19U) – **1,094 participants**
- Youth (Boys and Girls 7U-14U) – **11,188 participants**
- Licensed coaches registered with US Soccer through US Club Soccer – **Approx. 2,500**
- NISL - US Club Tournaments (Boys and Girls 9U-18U) – Total Teams: **Approx. 320**
 - Premier Cup & Chicago Cup
- NISL - US Club id2 Program



PREMIERSHIP REFEREE GAME MANAGEMENT

GAME TIME:

The officials are required to be at their assigned field within 10 minutes of game start time, dressed and ready to start the game. If a referee is tardy for his assigned game that official will be deducted \$5.00 for that game. The second offense for tardiness, the official will be suspended and taken off the schedule.

- Game clock starts when the ball is kicked off
- If there is a significant stoppage of time, additional time will be added to the game.
- End the game with proper soccer etiquette... allow the breakaway to continue, allow the corner kick... Game does not end just because your watch hits zero.

RULES OF COMPETITION:

Officials must be aware of the NISL Rules of Competition including any amendments of the Laws of the Game.
(PLEASE REVIEW THE NISL PREMIERSHIP MATCH DAY GUIDE)

PRE-GAME PROCEDURE:

- Each team must present TWO (2) copies of the OFFICIAL NISL GAME Roster prior to the start of the game.
- ONE (1) copy is given to the opposing team to be able to verify the players' jersey numbers and the picture matches the players' face.
- ONE (1) copy is given to the game officials to check teams roster, players id's and equipment.
- Additional age eligible players can be added as "Write Ins" on the GAME ROSTER. NISL Player passes must be presented for those players.
- Failure to provide the OFFICIAL NISL GAME ROSTER will result in a fine and/or forfeiture
- In the event that the opposing team disputes a rostered players photo matching the player present, the issue is then brought to the game officials to be addresses.
- The Officials are to inspect all players for safety to participate (ex. Dangerous equipment, cleats, jewelry, belts, hats, knee braces, etc.).
- The referee is to explain the "ground rules" of the field to be used and give any final instruction to players and coaches.
- Only those players, coaches and "Write Ins" with player passes listed on the GAME ROSTER will be allowed in the technical area.
- The Officials are to retain GAME ROSTER and will be turned into the NISL supervisor at the end of the last game.
- Tardy players must report to the linesperson to confirm that they are on the OFFICIAL GAME ROSTER WITH PHOTOS.
- PLAYERS THAT ARRIVE AFTER HALF TIME ARE NOT PERMITTED TO PLAY.

POST GAME

- Referee must verify OFFICIAL NISL GAME ROSTER by:
 - Record the Final Game score.
 - Goals- record minute and player who scored goals on GAME CARD
 - Cards- record minute and player who earn yellow or red card on GAME CARD

If a player or a coach receives a red card - A report must be written on back of game card and report email to philip@chicagosoccer.com immediately following the game. All other in discrepancies regarding the game that the referee needs to communicate to the league office may do so within forty-eight hours of the game.

- OFFICIAL NISL GAME ROSTER (One from both Team) must be given to the NISL supervisor at the end of the last game. Failure to do so could result in non-payment of those officials.



PREMIERSHIP RULES AND REGULATIONS

OFFICIAL GAME CARD:

It is the responsibility of each team to print off (2) TWO copies of the OFFICIAL GAME ROSTER and bring to every NISL scheduled game. (1) One Copy will be handed to the referee and (1) One Copy will be given to the opposing teams coach prior to kick-off . All players and coaches should be listed on an NISL official game card.

Player passes ARE NOT REQUIRED at check-in if the players name and photo is included on the NISL Official Game Roster.

If the players name and photo is NOT present on the game roster, the coach or administrator can write that registered player as a "WRITE IN" and present his or her current NISL player pass to the game official at that game.
(Red Carded players cannot be written on the game roster)

If a players' name is not on the game roster or does not have a player pass present at the NISL league game. The game may be played, but that game could be recorded as a forfeit and the club will receive a forfeit fine.

No guest players. All players must be registered with ONE (1) NISL Club and NISL League and appear on an official NISL game roster.

Uniform Numbers must match the player's name on the NISL game card.

Any NISL registered player from your NISL Club/Organization is allowed to play on the age appropriate team providing he or she is in good standing and not under suspension.

11v11 Rosters are limited to a maximum of 18 players and will need at least 7 players to start the game

COACHING DURING THE GAME: (RULE 403a.)

No coaching other than the conveying of tactical instruction is permitted during the game.

The head coach is responsible for the actions of all persons associated with the team. The head coach shall ensure that no such person violates the coaching restriction. Violations by any person including spectators associated with the team will be deemed the action of the head coach.

The Technical Area extends one yard on either side of the designated seated area and extends forward up to a distance of one yard from the touchline.

A maximum of 3 Coaches/Managers Must have (US Club/NISL passes) are permitted in the technical area/team side of the field.

Only 1 person at a time is authorized to stand and convey tactical instructions, and must return to their position after giving such instructions. The coach and other officials must remain within the confines of the technical area except in special circumstances

PREMIER GAME INFORMATION:

There is no rescheduling of games by teams. Games will only be rescheduled due to weather or ground conditions and will be determined by the NISL. Teams that forfeit a game, the club will be **fined \$400**, 3 points will be awarded the other team, and the game will not be rescheduled.

GAMES TIMES: 12U = 2 x 35 minutes - 13U thru 19U = 2 x 40 minutes



All games are scheduled to begin on time. NO coin toss. The home team is listed first on the schedule and will determine direction. The visiting team is listed second on the schedule and will kick off. Games are a running clock with the halves will finish on time. If there is a significant stoppage time (injury or force of nature) time can be added to the game.

There is no warm-up on the field. The starting line-up is to be ready by game time

Uniform Color - Home Team wears **LIGHT** color uniform / Away Team wears **DARK** color uniform
In the event of a color conflict the **AWAY** team will be responsible for changing.

LEAGUE STANDINGS:

= 3 points for WIN

= 1 points for TIE

= 0 points for a LOSS

Teams not meeting game schedule obligations and fail to play a scheduled game will be fined **\$400.00 plus a deduction of 3 points from their league standings for every offense.** The team could be withdrawn from future NISL league play and a **\$1,000.00** performance bond maybe charged to the club.

Unless both teams and the referee agree to an alternate plan, teams must wait (30) thirty minutes before abandoning a game that has been started. Given the difficulty and cost of rescheduling, every attempt should be made to play the game irrespective of the length of the delay.

It is imperative that teams are fully aware of their team commitment for the upcoming season and are prepared to make all schedule changes at the schedule meeting.

In the event of teams are tied at the end of the regular season, the tie breaker will be:

POINTS - HEAD TO HEAD - GOALS DIFFERENTIAL - GOALS FOR - GOALS AGAINST - COIN TOSS

The TEAM CAPTAIN is the only person that can speak with the center referee BEFORE, DURING, or AFTER the game.

SUBSTITUTIONS:

Teams are permitted to have unlimited substitution

There is no substitution by the winning team in the last 5 minutes of the game.

If referee assesses that the winning team sustains an injury in the last five minutes the team's injured player can be replaced

If the losing team makes a substitution in the last 5 minutes the winning team can sub at the same moment.

RED CARDS:

PLAYERS RECEIVING A RED CARD

1st offense	\$ 100.00 fine	+ 1 Game suspension
2nd offense	\$ 150.00 fine	+ 3 Game suspension
3rd offense	\$ 300.00 fine	+ League suspension

PLAYERS RECEIVING A RED CARD FOR VIOLENT OFFENSE

1st offense	\$ 150.00 fine	+ 2 Game suspension
2nd offense	\$ 200.00 fine	+ 5 Game suspension
3rd offense	\$ 400.00 fine	+ 1 Year suspension

COACH BEING DISMISSED FROM THE GAME

(Red Card does not have to be shown)

1st offense	\$ 300.00 fine	+ 1 game suspension
2nd offense	\$ 500.00 fine	+ 3 game suspension
3rd offense	\$ 800.00 fine	+ league suspension



BOYS NPL FINALS 2024

COMMERCE CITY, COLORADO ★ JULY 8 - JULY 14, 2024

FORMAT: EACH TEAM WILL PLAY 3 GAMES IN A ROUND ROBIN FORMAT (JULY 8, 9, 10). ADVANCING TEAMS WILL PLAY KNOCKOUT GAMES IN QUARTERFINALS (JULY 12), SEMIFINALS (JULY 13) AND FINALS (JULY 14 BEFORE 2 PM). ALL TEAMS WILL HAVE A REST DAY (JULY 11)



Boys 06/05 (19U) 1st NISL NPL Division 1

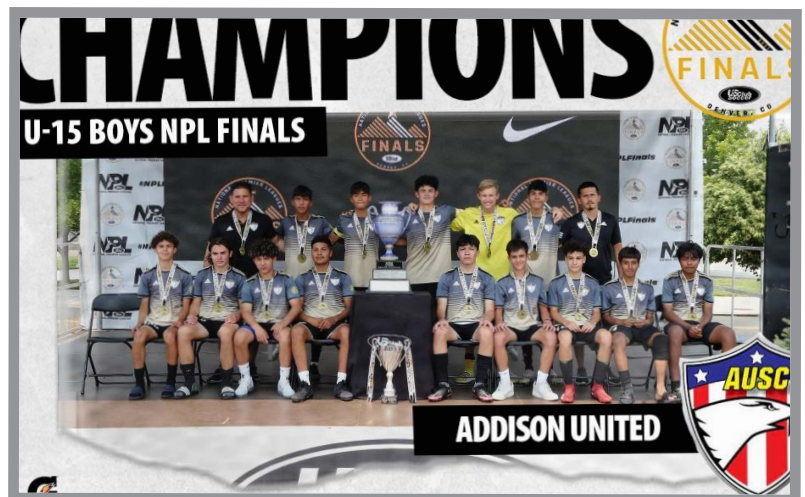
Boys 2007 (17U) 1st NISL NPL Division 1
(17U) 2nd NISL NPL Division 1

Boys 2008 (16U) 1st NISL NPL Division 1
(16U) 2nd NISL NPL Division 1

Boys 2009 (15U) 1st NISL NPL Division 1
(15U) 2nd NISL NPL Division 1

Boys 2010 (14U) 1st NISL NPL Division 1
(14U) 2nd NISL NPL Division 1

Boys 2011 (13U) 1st NISL NPL Division 1



NISL NPL PATHWAY

US Club Soccer



**NORTHER ILLINOIS
SOCCER LEAGUE**

**NATIONAL PREMIER
LEAGUE NPL 1**

**OPEN TO ACCEPTED
CLUB & TEAMS ONLY**

ADVANCEMENT

13U & 19U BOYS 1ST PLACE
NPL PREMIER 1 - MARCH TO JUNE

14U, 15U, 16U & 17U 1ST & 2ND PLACE BOYS
NPL PREMIER 1 - MARCH TO JUNE

15-19U GIRLS 1ST PLACE
NPL PREMIER 1 - SEPTEMBER TO NOVEMBER



NPL FINALS

Denver, CO · 2024

**BOYS JULY 8-14
GIRLS: JULY 11-15**

NPL FINALS 2024
NATIONAL PREMIER LEAGUES DENVER, COLORADO

NISL NPL PATHWAY

US Club Soccer



**NORTHER ILLINOIS
SOCCER LEAGUE**

**NATIONAL PREMIER
LEAGUE NPL 1**

**OPEN TO ACCEPTED
CLUB & TEAMS ONLY**

**NORTHER ILLINOIS
SOCCER LEAGUE**

**NATIONAL PREMIER
LEAGUE NPL 2**

**OPEN TO ACCEPTED
CLUB & TEAMS ONLY**

ADVANCEMENT

13U & 19U BOYS 2ND PLACE
NPL PREMIER 1 - MARCH TO JUNE

15-19U GIRLS 2ND PLACE
NPL PREMIER 1 - SEPTEMBER TO NOVEMBER

13U, 14U, 15U 16U 17U & 19U BOYS 1ST PLACE
NPL PREMIER 2 - MARCH TO JUNE



JUNE 14-17

MIDWEST R.
WINNERS



**BOYS: JULY 18-22
GIRLS: JULY 21-25**

NPL FINALS 2024
NATIONAL PREMIER LEAGUES DENVER, COLORADO

CORE VALUES

- 1** The NPL equips member leagues with tools and best practices to facilitate an optimal youth soccer experience for players, families, coaches and referees.
- 2** The NPL welcomes players who strive to play at the next level, as well as those who want a high-level, competitive atmosphere with their friends.
- 3** The NPL collaborates at every opportunity.
- 4** The NPL's competitive structure is intended to reduce burdens on families by limiting travel.
- 5** The NPL offers national pathways, opportunities and exposure to help players grow on and off the field.



VISION

The National Premier Leagues will serve youth soccer by forming and collaborating with leagues, adopting the Players First philosophy and supporting US Club Soccer's mission to foster the development of clubs.



GIRLS NPL FINALS 2024

COMMERCE CITY, COLORADO ★ JULY 11 - 15, 2024

FORMAT: EACH TEAM WILL PLAY 3 GAMES IN A ROUND ROBIN FORMAT (JULY 11, 12, 13).
ADVANCING TEAMS WILL PLAY KNOCKOUT GAMES IN SEMIFINALS (JULY 14)
AND (FINALS JULY 15 BEFORE 2 PM).

2023/2024 NISL 1ST PLACE GIRLS NPL DIVISION



W 06/05	(19U) Wheaton United 2006 G Academy
W 2007	(17U) Wheaton United 2007G Academy
W 2008	(16U) Chicago Inferno 2008 Premier MWC
W 2009	(15U) IE - Rampage Phenoms G2009
W 2010	(14U) 1st Place NISL SPRING NPL
W 2011	(13U) 1st Place NISL SPRING NPL



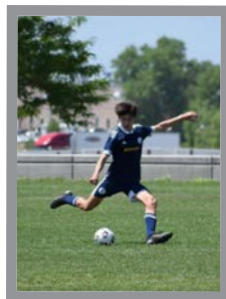
BOYS NATIONAL CUP XXIII MIDWEST REGIONALS



WAUKEGAN / LIBERTYVILLE, ILLINOIS ★ JUNE 14 - 17, 2024

National Cup XIX Midwest Regionals are open to teams in the 13-U through 18/19-U age groups, and 13-U through 18/19-U winners qualify for the National Cup XIX Finals in Commerce City, Colorado.

PREMIER LEAGUE BOYS (NPL)



Boys 06/05 (19U) 2nd NISL NPL Division 1
(19U) 1st NISL NPL Division 2 A
(19U) 1st NISL NPL Division 2 B

Boys 2007 (17U) 1st NISL NPL Division 2 A
(17U) 1st NISL NPL Division 2 B

Boys 2008 (16U) 1st NISL NPL Division 2 A
(16U) 1st NISL NPL Division 2 B

Boys 2009 (15U) 1st NISL NPL Division 2 A
(15U) 1st NISL NPL Division 2 B

Boys 2010 (14U) 1st NISL NPL Division 2

Boys 2011 (13U) 2nd NISL NPL Division 1
(13U) 1st NISL NPL Division 2 A
(13U) 1st NISL NPL Division 2 B

BOYS NATIONAL CUP XXIII MIDWEST FINALS



COMMERCE CITY, COLORADO ★ JULY 18 - 22, 2024



GIRLS NATIONAL CUP XXIII MIDWEST REGIONALS



WAUKEGAN / LIBERTYVILLE, ILLINOIS ★ JUNE 14 - 17, 2024

National Cup XIX Midwest Regionals are open to teams in the 13-U through 18/19-U age groups, and 13-U through 18/19-U winners qualify for the National Cup XIX Finals in Commerce City, Colorado.

2023/2024 NISL 2ND PLACE GIRLS NPL DIVISION



W 05/06

W 2007

W 2008

W 2009

W 2010

W 2011

(19U) TST 2005

(17U) IE - Lockport 07/08G's Premier

(16U) Wheaton United 2008G Academy

(15U) IE - JaHbat G2009 Premier

(14U) 2nd Place NISL SPRING NPL

(13U) 2nd Place NISL SPRINGNPL

GIRLS NATIONAL CUP XXIII MIDWEST FINALS

COMMERCE CITY, COLORADO ★ JULY 21 - 25, 2024



4 REGIONALS

SOUTH CENTRAL
NATIONAL CUP XXIII
REGIONAL
20 24

JUNE 7-10
TULSA, OK

MIDWEST
NATIONAL CUP XXIII
REGIONAL
20 24

JUNE 14-17
LIBERTYVILLE/WAUKEGAN, IL

SOUTHEAST
NATIONAL CUP XXIII
REGIONAL
20 24

JUNE 15-18
BERMUDA RUN, NC

WEST
NATIONAL CUP XXIII
REGIONAL
20 24

JUNE 21-24
TEMECULA, CA

1 CHAMPIONSHIP

BOYS / JULY 18-22

GIRLS / JULY 21-25

DENVER, CO



NISL NPL WHERE CLUBS DON'T HAVE TO DRIVE OR FLY PAST A GOOD GAME TEAMS QUALIFY LOCALLY FOR A NATIONAL CHAMPIONSHIP

